

science splice! guide



TABLE OF CONTENTS

3 SUMMARY/OUTLINE OF ROOM

4 WORKSPACE PUZZLE

4 SPECTRAL LINES PUZZLE

6 EQUIPMENT STORAGE MINIGAME

7 NONOGRAM KEYPAD

8 BUNSEN BURNER / LAB ATTIRE

NARRATIVE WALKTHROUGH

Script

- Players have joined as an intern at Ethical Labs, they receive a rundown of the rules (Easter Egg: violating the “don’t run” rule (moving across rooms too fast) causes the player to “die” temporarily). The most important rule is not to press the giant red button. Players cannot progress until they have pressed it.
- The second video is triggered and Dr. Jay informs players they have been split into half (Left and Right brain). They see different clues on each side and will have to communicate in order to synthesize a cure. They must do this within 1 hour or the split becomes permanent.
- Once all puzzles are solved, players vote on their separate screens to fuse together or kill the other half and become the dominant body.
- Alternate Endings: Prisoner’s dilemma, if both sides vote to fuse, they are back to normal, if only one votes to kill, they take over the body, if both vote to kill, they both die.

SUMMARY/OUTLINE OF ROOM

- I. Players will first watch the Introduction Video and Press the Red Button in the Orientation Room which will start the second video.
- II. After getting spliced, the players will choose between left brain or right brain, trying to have an equal number of both.
- III. Players will then answer questions on the computer
- IV. After entering the computer passwords, they will have access to the spectral lines puzzle
- V. The answer to the spectral lines puzzle is an ID Card that can give people access to the equipment storage.
- VI. Scan the ID card below the safety is cool poster
- VII. After completing the equipment storage, they will be able to find the code ATOM,
- VIII. This unlocks the previously locked folder with instructions to the bunsen burner and the lab attire puzzle
- IX. After finishing the lab attire puzzle, they can work on the bunsen burner puzzle, and then on the centrifuge requirements.
- X. After creating the antidote, they will have a prisoner's dilemma in which they decide to drink it or kill their partner to become the only remaining clone
- XI. Depending on the players' decision, they will view an ending video
- XII. Players will be taken to an endscreen which allows them to view alternate endings and meet the design team

WORKSPACE

Walkthrough:

- Players will answer three security questions utilizing hints from around the Workspace Room.
 - Question 1: What is your anniversary? Enter in the Format MM DD
 - Players will work to combine both calendars to find the answer, The Left Brain can see the calendar of May, while the Right Brain sees the actual image where the wedding rings are.



Left Brain View



Right Brain View

- Question 2: What is the name of your youngest child?
 - Left Brain picture on top of the computer so see the order of family members Left to Right: Nate, Cynthia, Vinny, Carlos, and Sam.
 - Right Brain: Family Picture showing the third person as the youngest.





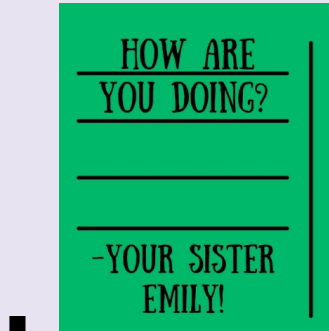
-
- Question 3: What is the name of the relative that lives closest to you?



- Players on the left brain will see that the office is located in Los Angeles



-
- Right Brain sees the postcard of New York while the left brain can see the writing on the back saying that it is from your relative Emily.



Answer:

- Question 1 Answer: 0508
- Question 2 Answer: Vinny
- Question 3 Answer: Emily

Hints:

- Hint: Calendars are a great way to remember special events in your life!
- Hint: Pictures are worth a thousand words, but words behind a picture are worth something too!
- Hint: Click on the postcards to see what is behind them!

SPECTRAL LINES PUZZLE

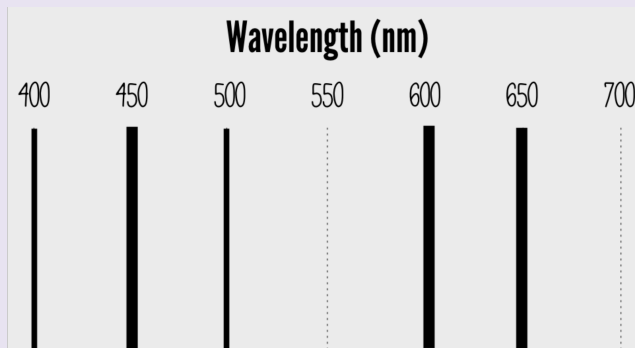
Walkthrough:

- The fake periodic (visible to the left brain) table contains 3 real elements: Sodium (Na), Hydrogen (H), and Gold (Au)
- From the spectral lines charts (visible to the right brain):
 - Sodium: 400, 450, and 600
 - Hydrogen: 450, 500, 650
 - Gold: 600, 650
- Drag lines onto the blank spectral lines chart, if there are two lines at a given spot, use a thick line

Answer:

- thin lines: 400, 500

- thick lines: 450, 600, 650



Hints:

- The periodic table looks fake, but there may be some elements of truth inside it.
- Some of the elements have overlapping spectral lines. Use the thicker lines to indicate these!

EQUIPMENT STORAGE MINIGAME

Walkthrough + Answers

- Scan The ID Card below the safety is cool poster
- Each level of the minigame is accessible by clicking on a different item in the room (yellow cabinet, black counter, glass case, brown cabinet)





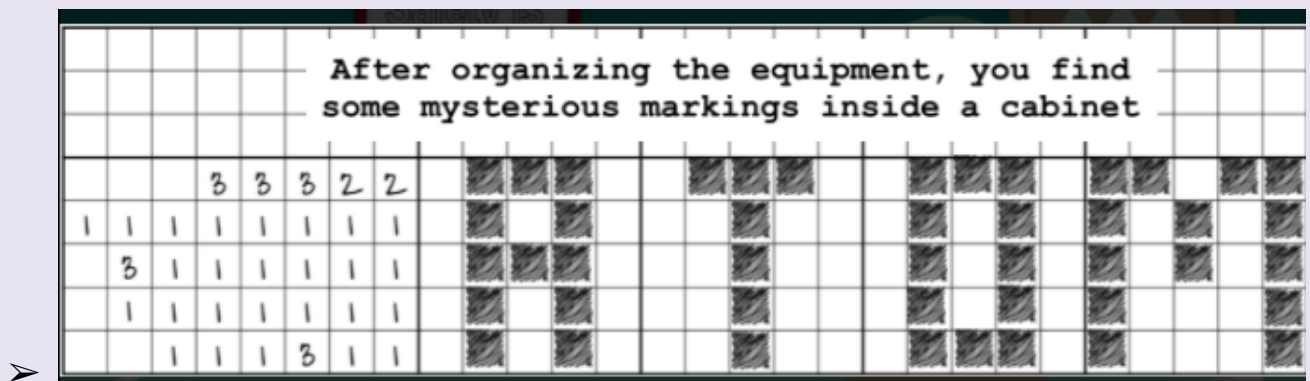
Hints:

- Did you hear that noise? Did something print out?
- Woah, I think I saw some blinking lights below the safety is cool poster!

NONOGRAM PUZZLE

Walkthrough:

Answer:



ATOM

Hints:

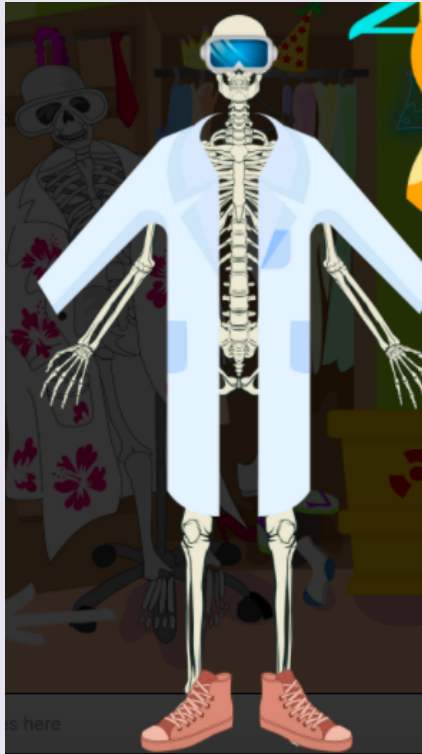
- Maybe there are some instructions nearby!
- It kind of looks like a letter!



BUNSEN BURNER / LAB ATTIRE PUZZLE

Walkthrough:

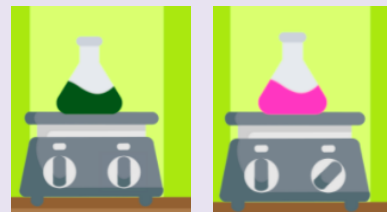
- Put on lab attire
 - Correct Assortment of lab attire
 - Requirements:
 - Lab Jacket On,
 - Safety Glasses
 - Closed Toe Shoes



Example of Correct Answer

➤ After completing the nonogram puzzle, the encrypted file is unlocked. It includes instructions on how to complete the antidote.

- Place the Liquid that Burns Pink Here to Add it to the vial
 - Click on the chemicals on the shelf
 - Turn on the Bunsen Burner with the right knob and It turns from dark green to pink!
- Place the solid chemical here to add it to the vial
 - Click on the rocks on the shelf
 - Using the scale, add the different rocks and elements to see what weighs the same.
Make sure to place the rock first and then the element and to reset multiple times



- Place the liquid that burns Blue here to add it to the vial
- Turn on the Bunsen Burner with the right knob and
- It turns from red to light blue!



➤ Assemble the antidote

- Click on the vials on the shelf
- Drag each chemical to its corresponding location
- Click the mix button



- Using the centrifuge
 - Click on the centrifuge
 - Drag and drop the purple vial into the centrifuge
 - Set the speed to 30 seconds and the speed to 2350
 - This can be found by clicking on the colored index card attached to the desk
 - Click the start button

Hints:

- I wonder why this bunsen burner is not hot to touch? Is something wrong?
- Could the post it note on the red, blue, yellow, and white colored square mean anything?
- The rock in the Unsplice Yourself guide does look quite unique!

Video Script:

We're inside the orientation room at the lab, on a live video call with an orientation giver person

Video 1 script:

Good morning uh- (checks clipboard/sticky note) I actually don't have a name written here so we'll just call you Intern #1! Congratulations on being selected as our only intern for this special lab study at Ethical Labs Inc. Our goal is to be as ethical as possible, so a few lab safety rules before we begin: If you have long hair, be sure you keep it tied up! Be sure to wear your lab coat, safety goggles, and always wear closed toed shoes!

No food or beverages, and no jewelry. In general avoid skin and eye contact with all chemicals and don't add solid ingredients to hot liquid ingredients.

But the most important thing is to not touch that giant button. Seriously, don't touch that button. I know you may be thinking "That button looks super fun to press, I'm gonna press it!" But I'm here to tell you not to press the button. No good can come from it. I remember my first day, I wanted to

press the button. But you shouldn't press the button. Nope nope nope. No button pressing here! Not a good idea.

text: Oh no. That was not a good idea.

Video 2 script:

- “No, don't touch that, AAHHHHH!..... Um....so you've spliced yourself into two, left brain and right brain! I can't believe you're alive! Or I guess you're both alive.... Ummmm anyway this isn't a great situation and I'm definitely not qualified for this.... Listen, maybe you can synthesize a cure in the lab? I don't wanna get fired for this..... but i'll be back in an hour with help, I really hope you figured it out by then or else we're both in deep trouble.”

Endings:

Ending 1 (join back together):

“I'm so glad you figured it out! I had total and complete faith in you, and I didn't find any help anyway. Now if my boss asks, this was just a normal orientation, nothing fancy. Well I guess welcome to ethical labs inc! You'll be a great fit here.”

Ending 2 (kill one clone):

“I'm so glad you figured it out and you're back in one piece! You did fuse yourself back together right? You seem a little..... different..... oh well I'm sure everything's fine! Welcome to ethical labs inc! You'll be a great fit here.

Ending 3 (both clones DIE):

“Well, it's been about an hour, how are things- wait oh my GOD WHY IS THERE A DEAD BODY? Oh no... I can't be held liable for this... (Ends call)”

